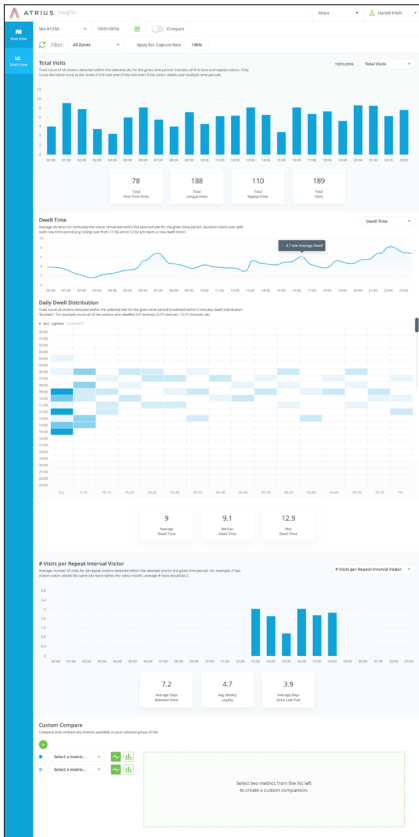
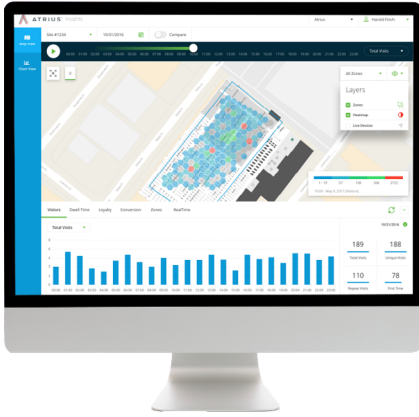


Atrius Insights



WHAT IS ATRIOUS INSIGHTS?

Atrius Insights is a cloud-based software product which provides geospatial analytics based on position data collected from Atrius Navigator or other third-party indoor positioning systems. Atrius Insights provides map-based location analysis of facilities for building owners, facility managers, and business analysts to understand movement of location enabled devices. Atrius Insights uses historical data to allow users to compare locations and analyze human interaction in space over time.

FEATURES

- Map-view visuals with analytics on people in a space
- Access to both web applications and APIs
- Historical and near real-time metrics
- Site groupings to roll-up metrics across multi-site organizations
- Easily links to other sources of spatial data
- Heatmap aggregations
- Comparisons – across metrics, sites, groupings, and time periods
- Zone-to-zone path analysis
- Custom chart creator
- Day, week, month, quarter, and year data selections
- Live device visualization
- Third-party positioning system metrics and visualization
- Integrate with current BI systems

HOW DOES IT WORK?

Atrius Insights relies on either the Atrius Navigator platform service or a Third-party positioning system, in addition to the Atrius Sensory Network. Indoor position locations are collected through Atrius Navigator, and that data is processed, aggregated, and stored in the cloud. From there, metrics are collected and can be visualized through our Atrius Insights web application or APIs.

Atrius Insights

DEPLOYMENT REQUIREMENTS

- Atrius Sensory Network
 - Enabled with Atrius luminaires (commissioned by the Atrius Deployment Team)
- Atrius Navigator platform service – mobile SDK and admin web application
 - OR 3rd party positioning data system¹
- Cloud hosted Map Service and floorplan²
- Microsoft Azure Active Directory authentication³

APPLICATION CUSTOMIZATION TOOLS

Atrius Insights includes an administration tool, Atrius Admin, for users to customize zones, metrics, sites, and organization parameters.

- Zone location information⁴
- Atrius Admin web application
 - Site
 - Groups
 - Zones
 - Metric customization

Notes:

- ¹ If you are using a third-party positioning system, the Atrius Sensory Network is not a deployment requirement
- ² This service is required to deliver the zoomable background image and the underlying meta-data about the site. Users can provide their own map service if capable, or we can coordinate the map service to be completed by one of our partners.
- ³ Users of Microsoft Office 365 will automatically have Microsoft Azure Active Directory. Microsoft Azure is used for simplicity and security reasons. No new user accounts or passwords will need to be created or maintained. In addition, users can develop their own trusted authorization policies to create, update, and deactivate accounts.
- ⁴ Site zone locations are not included and are to be provided by the customer

HOW DO I DEPLOY?

The developer will have access to Atrius Admin web application – a configuration tool – that is used for loading the map service, creating zones, adding multiple users, updating maps, and more.

SOFTWARE SPECIFICATIONS

Browser Support and Devices:

- Windows OS
 - Runs on the latest version of Chrome
- MacOS
 - Runs on the latest version of Chrome and Safari
- iOS (iPad) v10.2 or greater
 - Mini
 - Runs on the latest version of Chrome and Safari
 - Air 2
 - Runs on the latest version of Chrome and Safari
 - Pro
 - Runs on the latest version of Chrome and Safari

ORDERING INFORMATION

EXAMPLE: INSIGHTS WEBAPP 12M					
Series		Platform Service		Service Period	
INSIGHTS	Atrius Insights spatial analytics application	WEBAPP	Web-based application viewer and API access	12M	1 year
				24M	2 years
				36M	3 years

Note: Actual performance may differ as a result of end-user environment and application. Specifications subject to change without notice.